



For Lease

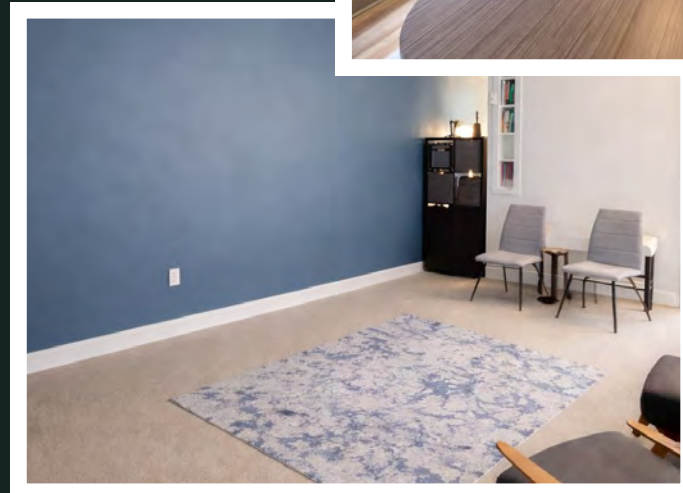
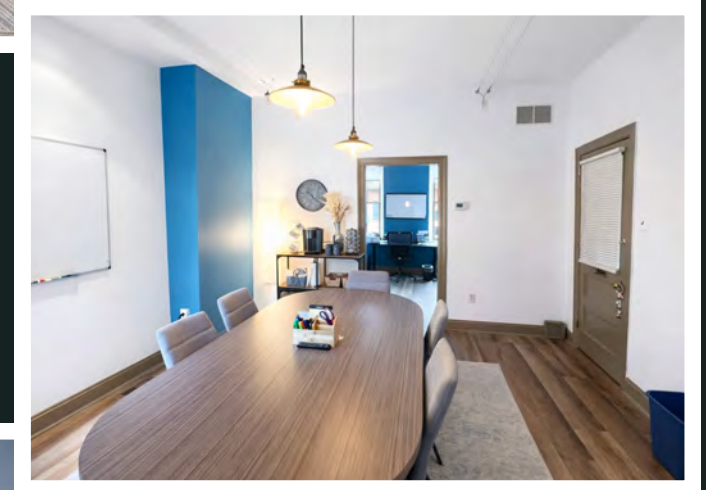
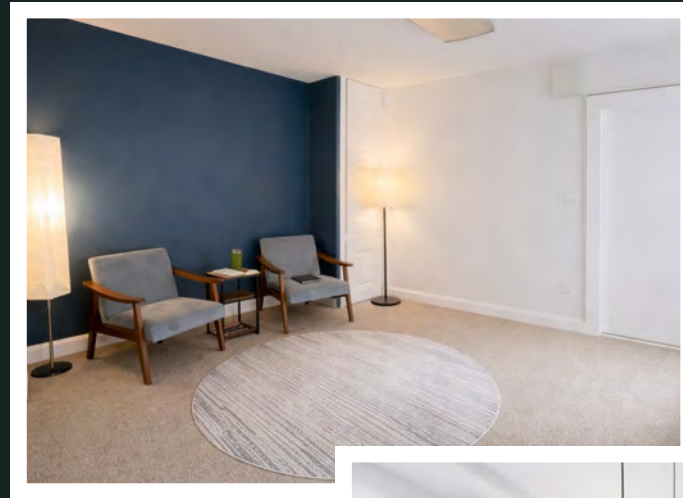
**FIRST FLOOR
CHURCH STREET
COMMERCIAL SPACE**

**WEST CHESTER
BOROUGH**

17 South Church Street,
West Chester, PA 19382

PROPERTY HIGHLIGHTS

- First Floor 900 SF Retail/
Office Space on First Block of
S. Church Street
- (2) On-Site Dedicated Parking
Spaces
- Private Bathroom in Suite
- Access to Private Outdoor
Courtyard/Seating Area
- Tenant Visibility onto Church
Street
- All-Inclusive Rental Rate



LEASE RATE
\$2,600 Per Month

MEET THE NEIGHBORS

NEW!
Blazin' J's
HOME OF THE
"Hot Chicken Sandwich"

NEW!
TWIN VALLEY COFFEE
- FUNDRAISING -

IRON HILL
BREWERY & RESTAURANT

SALOON 151
WHISKEY BAR & GRILL

SEDONA
TAPHOUSE

WRONG CROWD
BEER CO. WEST CHESTER, PA

COMING SOON!
9
PRIME
STEAKHOUSE - SEAFOOD - CRAFT COCKTAILS

ARTILLERY
BREWING CO.

CARLINO'S
MARKET

SITE


Chester County
Pennsylvania
COURTHOUSE


Market Street Print
Fast. Easy. Done.



West Chester

pennsylvania

West Chester is the historic county seat and a vibrant part of the Brandywine River Valley.

With more than 60 shops and 65 restaurants, West Chester can keep you busy for an entire day. Enjoy historic walking tours at your leisure.

West Chester was named to the top ten "Best Small Town Downtowns in the United States" by Bert Sperling and Peter Stander, authors of Best Places to Raise a Family.

Hosting over 100 events annually, West Chester brings thousands of visitors and residents to the area on a regular basis.



@westchesterviews



FOR MORE INFO
CONTACT US

ANDREW CARLINO

(484) 887-8202 | Ext. 103

ACarlino@PillarRealEstateAdvisors.com

ANDREW TURNER

(484) 887-8202 | Ext. 102

ATurner@PillarRealEstateAdvisors.com

"The information contained in this document has been obtained from sources believed reliable. While Pillar Real Estate Advisors, LLC does not doubt its accuracy, Pillar Real Estate Advisors, LLC. has not verified it and makes no guarantee, warranty or representation about it. It is your responsibility to independently confirm its accuracy and completeness. Any projections, opinions, assumptions or estimates used are for example only and do not represent the current or future performance of the property. The value of this transaction to you depends on several factors which should be evaluated by your tax, financial and legal advisors to determine to your satisfaction the suitability of the property for your needs. Photos herein are the property of their respective owners and use of these images without the express written consent of the owner is prohibited."