



PROFESSIONAL/MEDICAL OFFICE CONDO FOR LEASE IN PAOLI, PA



250 W LANCASTER AVE | PAOLI, PA 19301



PILLAR REAL ESTATE ADVISORS

P: 484-887-8202 | www.PillarRealEstateAdvisors.com

535 N. Church Street, West Chester, PA 19380



PROFESSIONAL/MEDICAL OFFICE CONDO FOR LEASE IN PAOLI, PA

PROPERTY HIGHLIGHTS

Professional Office Condo For Lease:

- +/- 560 SF—Suite 275
- Highly Desirable Multi-Tenanted Professional / Medical Office Building
- Ample On-Site Parking, both covered and uncovered
- Large Offices with Storage and Abundant Natural Light
- Elevator Accessible Building
- Well-located on Business Rt. 30 across the street from Paoli Hospital
- Easy access to major thoroughfares Business Rt. 30, US 202, Rt. 252, and PA Turnpike



250 W LANCASTER AVE | PAOLI, PA 19301



PILLAR REAL ESTATE ADVISORS

P: 484-887-8202 | www.PillarRealEstateAdvisors.com

535 N. Church Street, West Chester, PA 19380



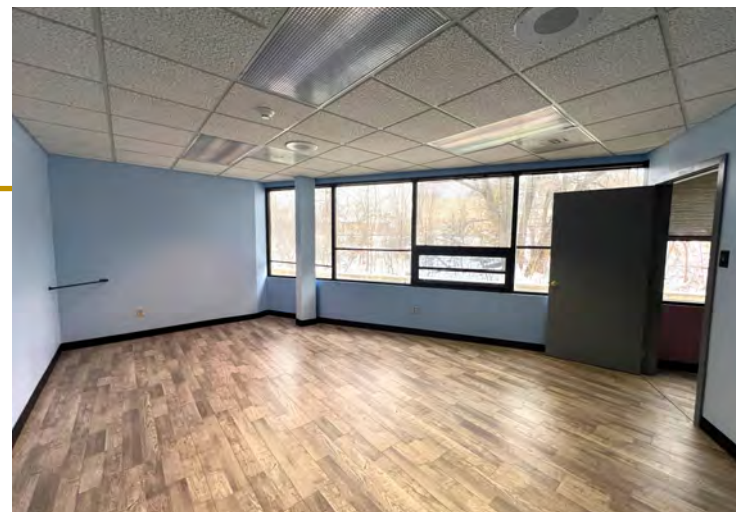
PROFESSIONAL/MEDICAL OFFICE CONDO FOR LEASE IN PAOLI, PA

AVAILABLE SUITE:

Suite 275:

+/- 560 SF

- (2) Offices
- Waiting Area / Reception
- Powder Room
- Storage Closet
- Abundant Natural Light



ASKING RENT:

\$1,375 PER MONTH + UTL.

250 W LANCASTER AVE | PAOLI, PA 19301



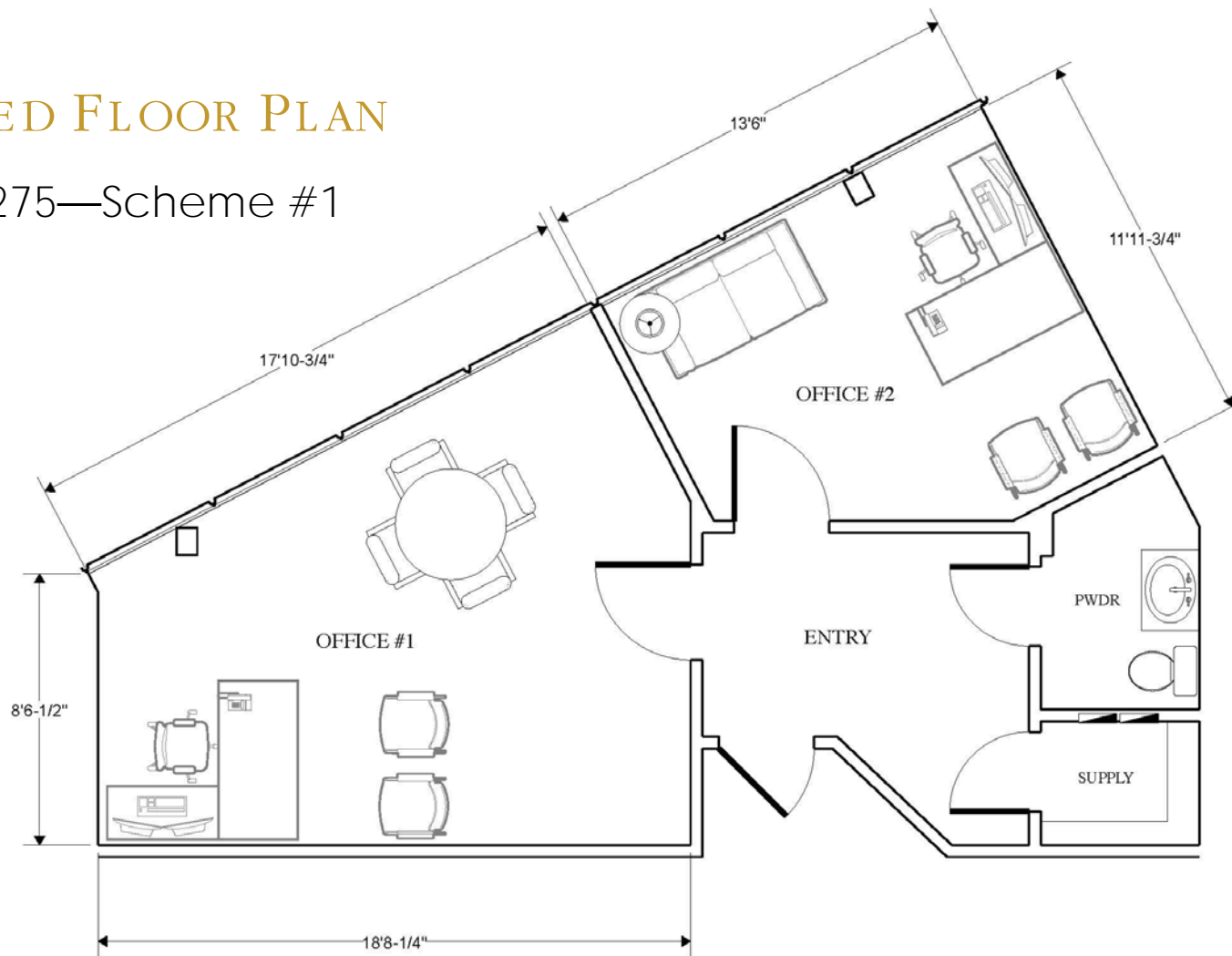
PILLAR REAL ESTATE ADVISORS

P: 484-887-8202 | www.PillarRealEstateAdvisors.com

535 N. Church Street, West Chester, PA 19380

PROPOSED FLOOR PLAN

Suite #275—Scheme #1



250 W LANCASTER AVE | PAOLI, PA 19301



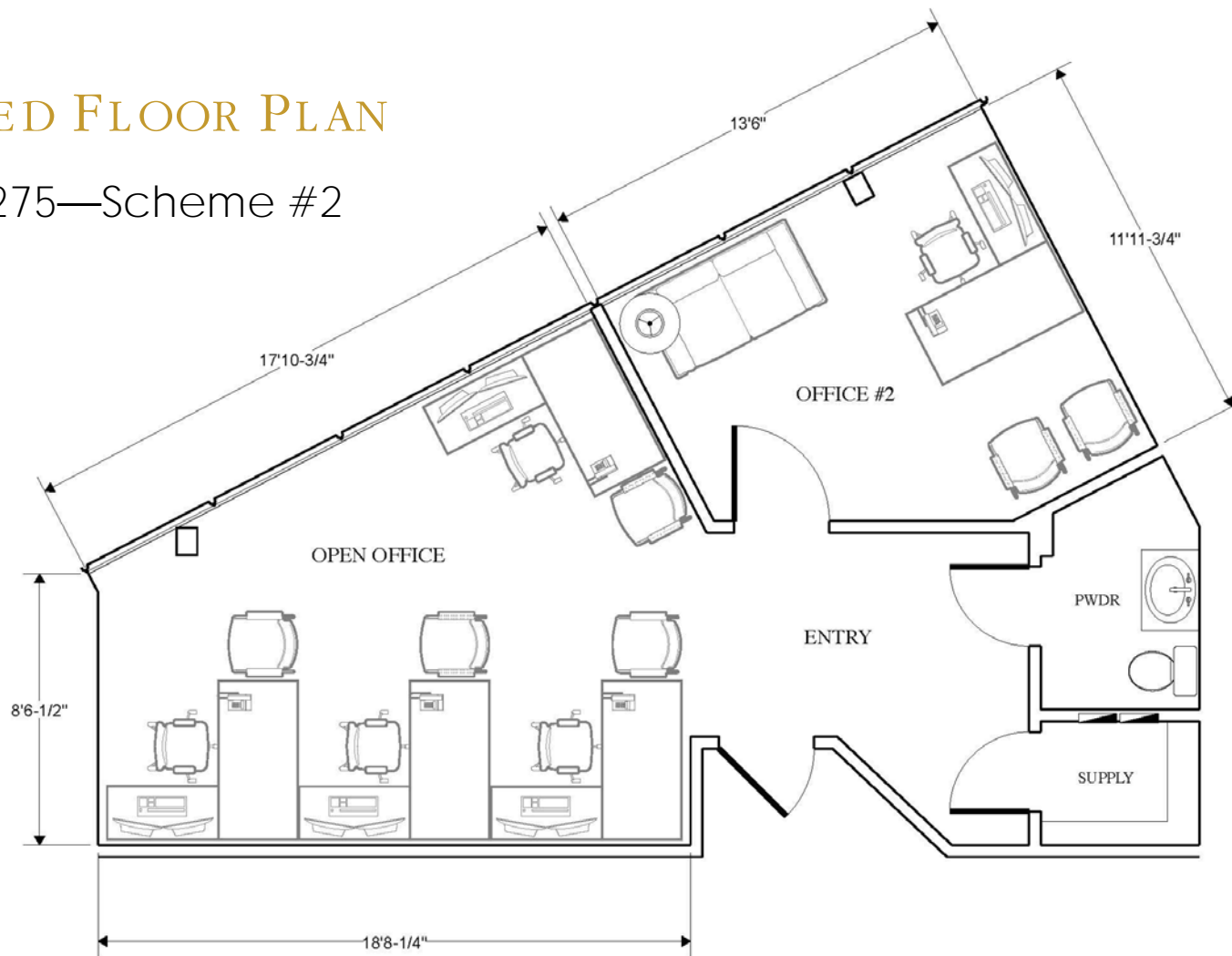
PILLAR REAL ESTATE ADVISORS

P: 484-887-8202 | www.PillarRealEstateAdvisors.com

535 N. Church Street, West Chester, PA 19380

PROPOSED FLOOR PLAN

Suite #275—Scheme #2



250 W LANCASTER AVE | PAOLI, PA 19301



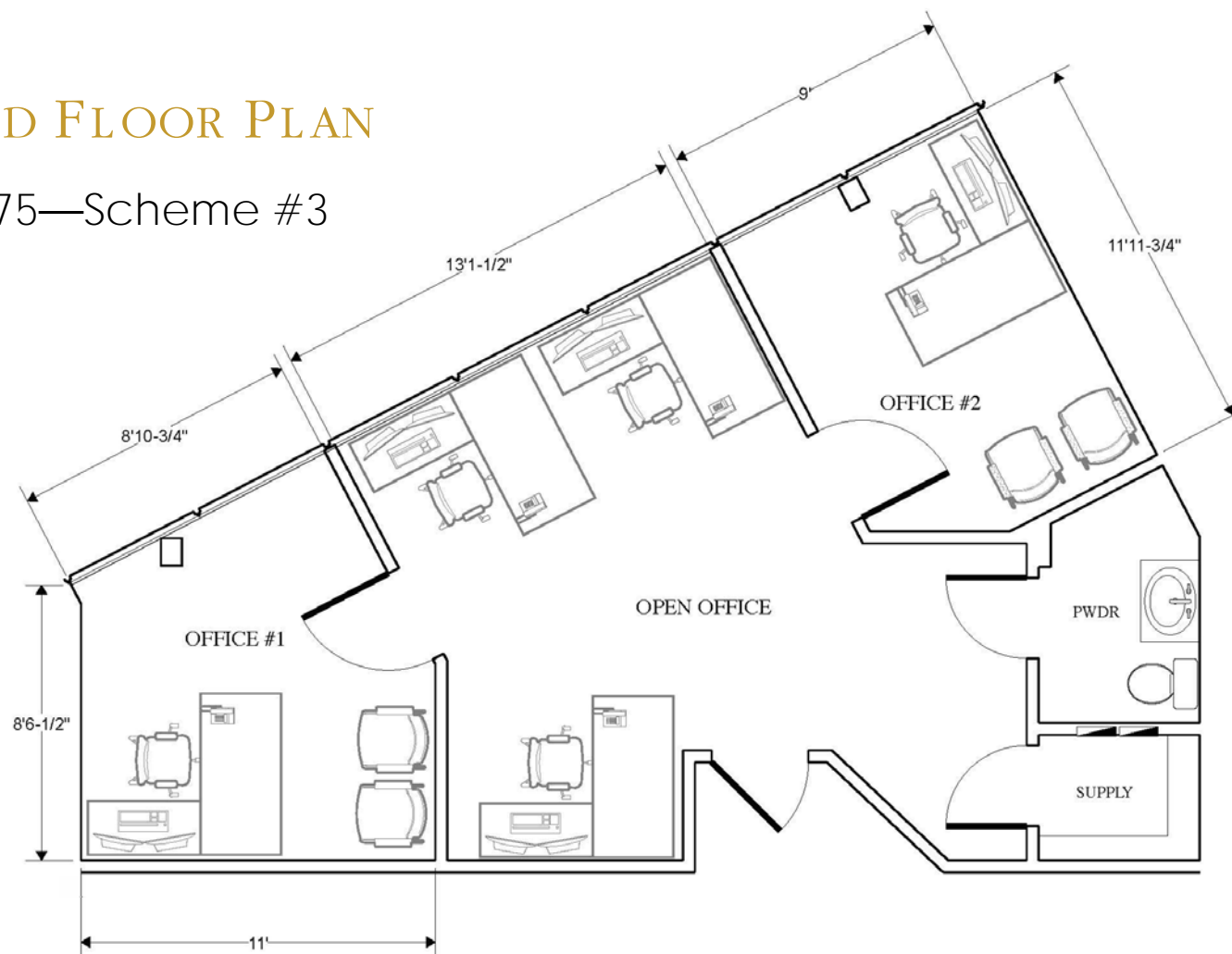
PILLAR REAL ESTATE ADVISORS

P: 484-887-8202 | www.PillarRealEstateAdvisors.com

535 N. Church Street, West Chester, PA 19380

PROPOSED FLOOR PLAN

Suite #275—Scheme #3



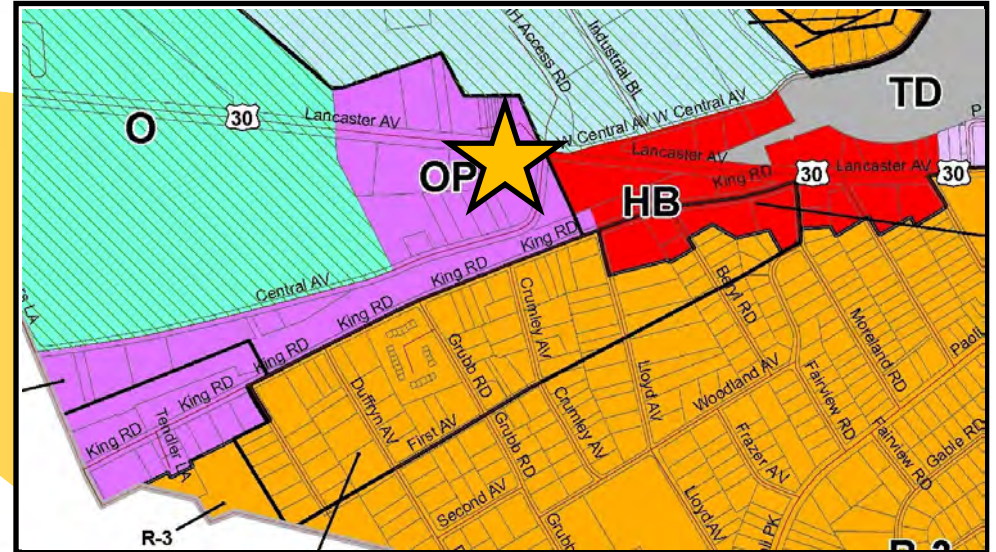
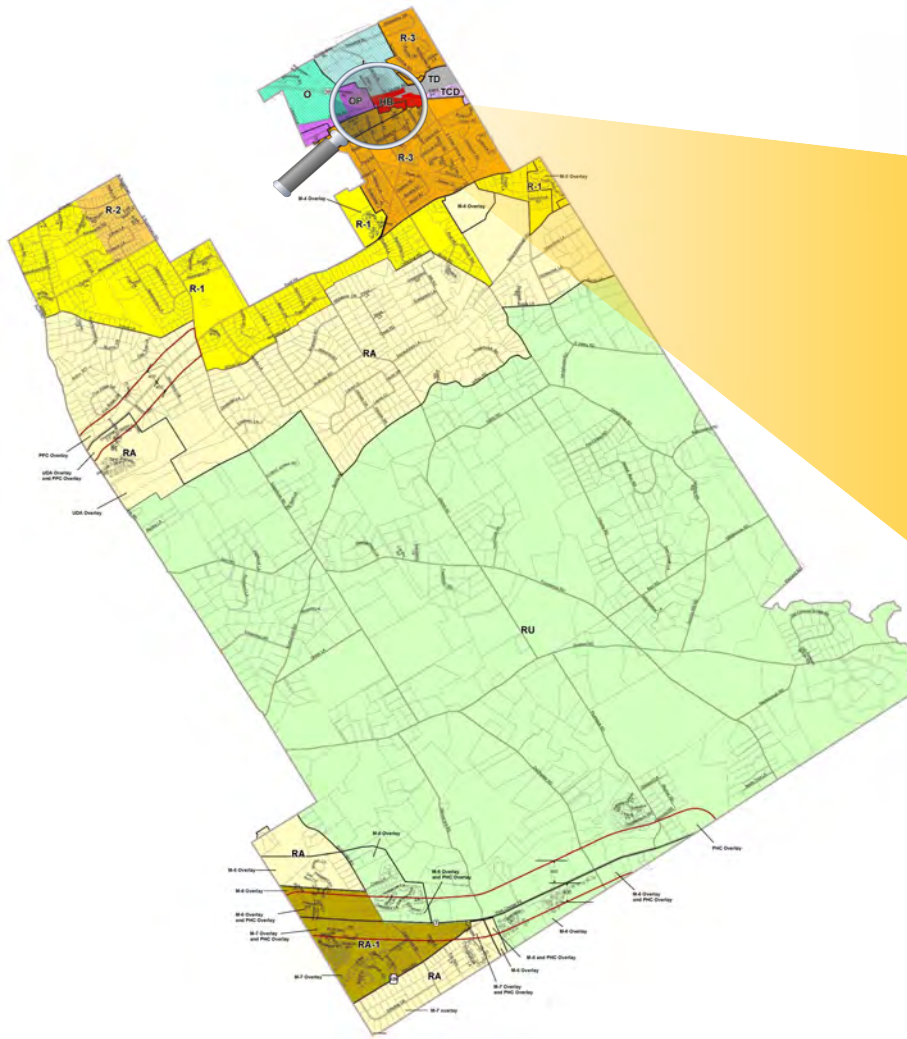
250 W LANCASTER AVE | PAOLI, PA 19301



PILLAR REAL ESTATE ADVISORS

P: 484-887-8202 | www.PillarRealEstateAdvisors.com

535 N. Church Street, West Chester, PA 19380



Zoning:
OP—Office Professional

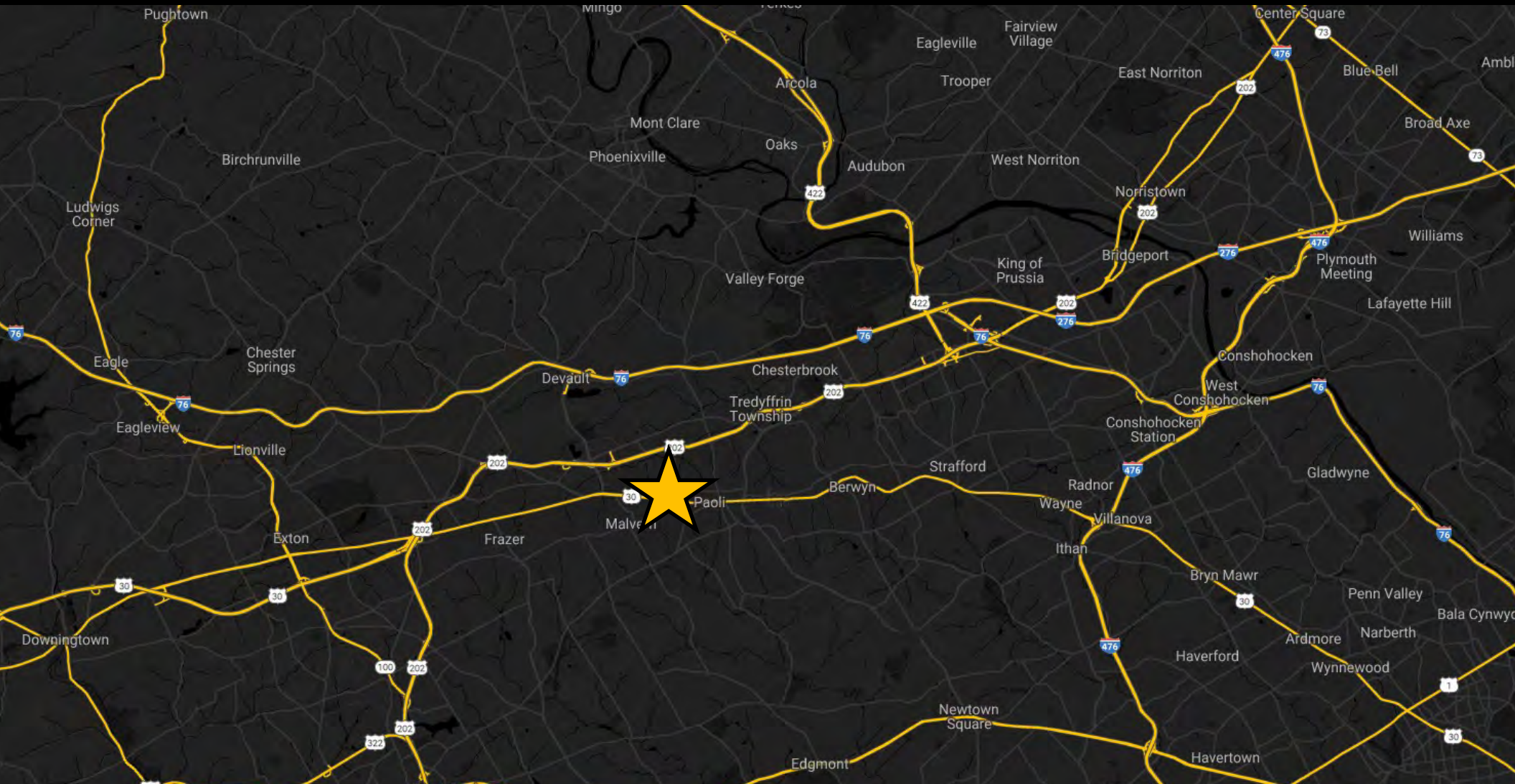
250 W LANCASTER AVE | PAOLI, PA 19301



PILLAR REAL ESTATE ADVISORS

P: 484-887-8202 | www.PillarRealEstateAdvisors.com

535 N. Church Street, West Chester, PA 19380



250 W LANCASTER AVE | PAOLI, PA 19301



PILLAR REAL ESTATE ADVISORS

P: 484-887-8202 | www.PillarRealEstateAdvisors.com

535 N. Church Street, West Chester, PA 19380



PROFESSIONAL/MEDICAL OFFICE CONDO FOR LEASE IN PAOLI, PA

PILLAR REAL ESTATE ADVISORS

BRINGING EXPERIENCE, PROFESSIONALISM, AND INTEGRITY
TO COMMERCIAL REAL ESTATE BROKERAGE

JAKE JEWELL

JJEWELL@PILLARREALESTATEADVISORS.COM

484-887-8202 | Ext. 105

"The information contained in this document has been obtained from sources believed reliable. While Pillar Real Estate Advisors, LLC does not doubt its accuracy, Pillar Real Estate Advisors, LLC. has not verified it and makes no guarantee, warranty or representation about it. It is your responsibility to independently confirm its accuracy and completeness. Any projections, opinions, assumptions or estimates used are for example only and do not represent the current or future performance of the property. The value of this transaction to you depends on several factors which should be evaluated by your tax, financial and legal advisors to determine to your satisfaction the suitability of the property for your needs.

Photos herein are the property of their respective owners and use of these images without the express written consent of the owner is prohibited."

250 W LANCASTER AVE | PAOLI, PA 19301



PILLAR REAL ESTATE ADVISORS

P: 484-887-8202 | www.PillarRealEstateAdvisors.com

535 N. Church Street, West Chester, PA 19380