



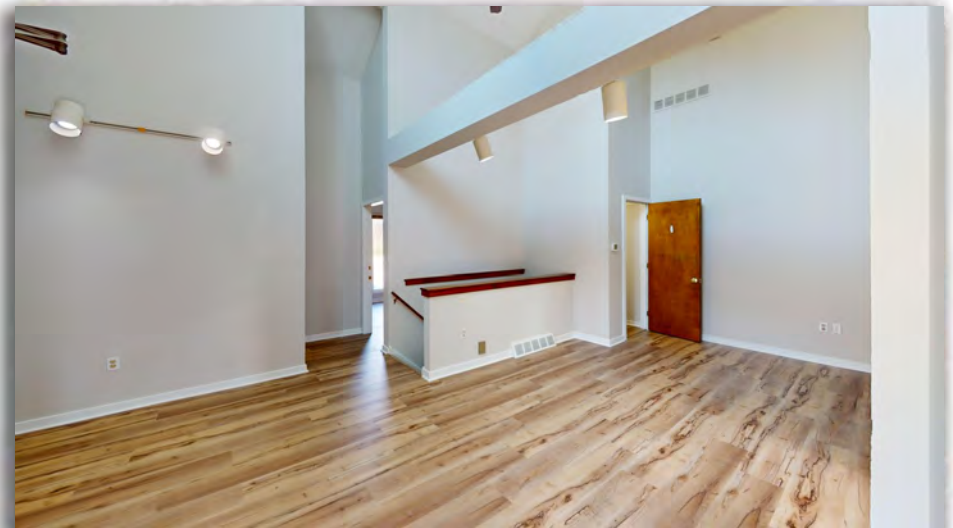
FOR LEASE
PROFESSIONAL OFFICE CONDO
DOWNTOWN EXTON, PA



300 N POTTSTOWN PIKE, UNIT 290 | EXTON, PA

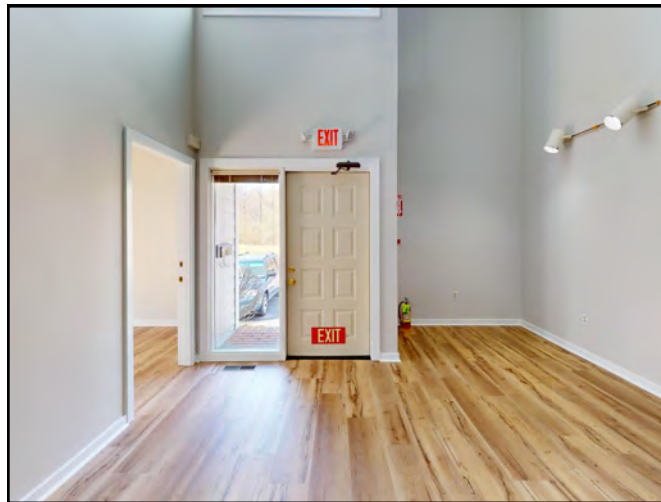
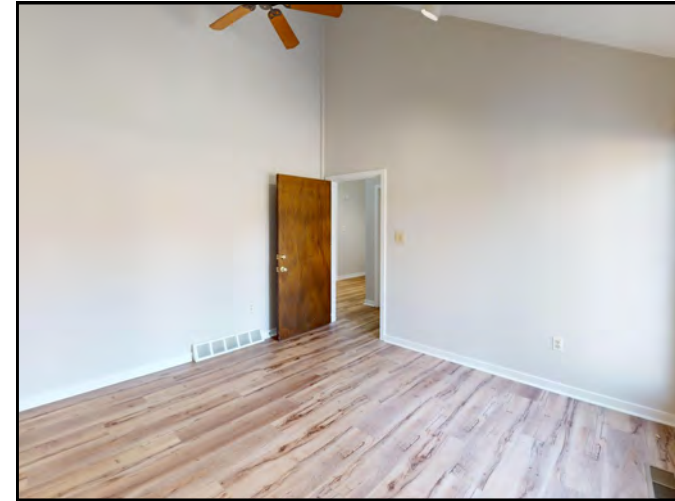
Property HIGHLIGHTS

- Very-Well Located Downtown Exton Office Space For Lease
- Turnkey 1st Floor w/ Full Finished Lower Level
- Brand New Wide-Plank LVP Flooring and Fresh Paint Throughout
- Newer Hardie Board Exterior Siding in Well-Maintained Professional Business Park
- Currently Configured With (4) Private Offices, Waiting / Reception Area / Lg. Coworking Space, Powder Room + Full Finished Lower Level With (3) Additional Offices.
- Close Proximity to Downtown Exton Shopping Centers - Fairfield Place, Exton Square, Whiteland Town Center & the Desirable Main Street at Exton
- Perfect for Personal Service, Office & Medical Office Professionals



LEASE RATE:
\$2,900 PER MONTH

Interior PHOTOS

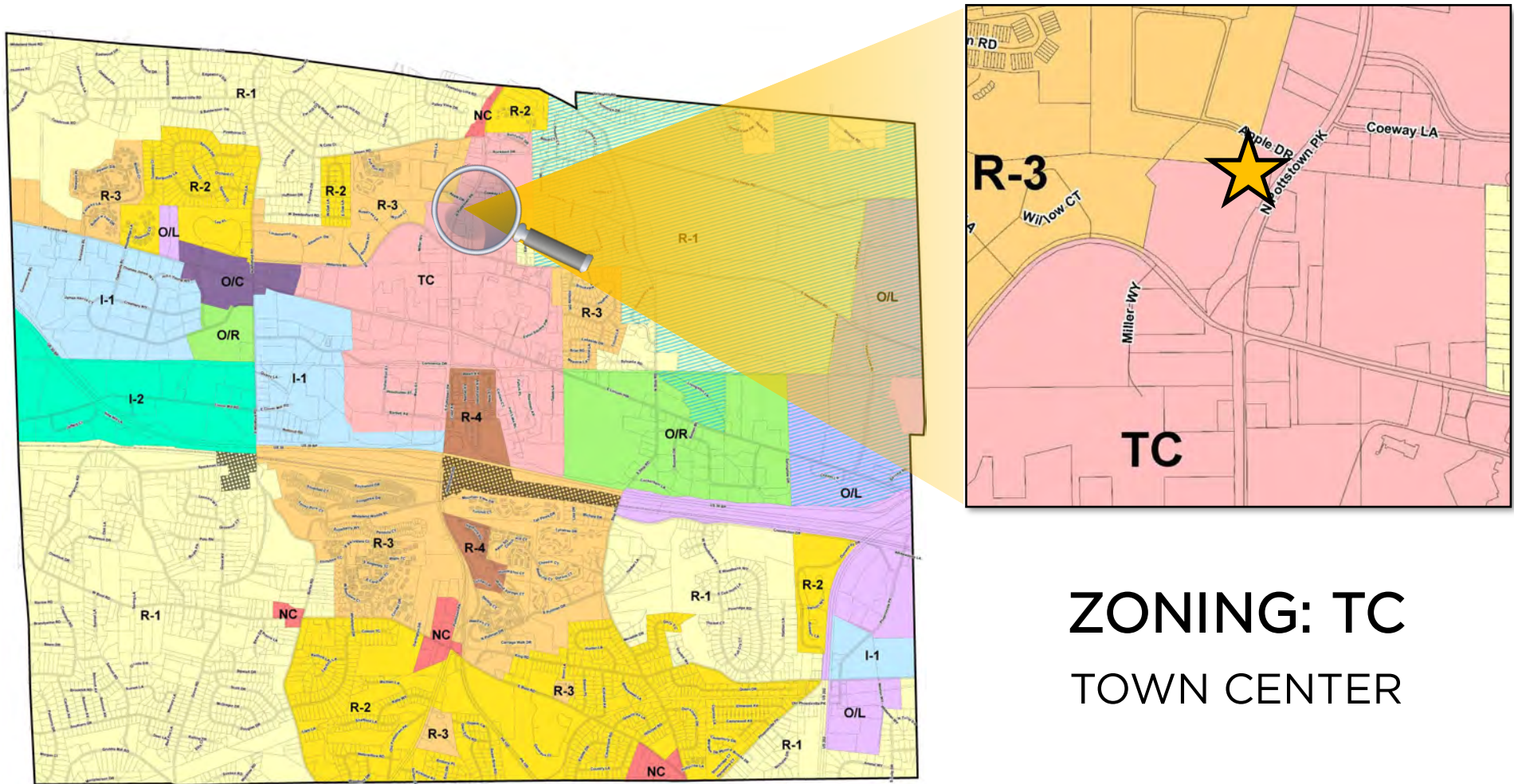


Area MAP



ZONING MAP

**All zoning information should be independently verified with governing municipality



ZONING: TC
TOWN CENTER

ZONING INFORMATION



**All zoning information should be independently verified with governing municipality

ARTICLE IV Town Center District

§ 325-13. TC Town Center Mixed Use District. [Amended 3-10-2004 by Ord. No. 310; 4-23-2008 by Ord. No. 360; 4-27-2011 by Ord. No. 386; 3-12-2014 by Ord. No. 410]

A. Purpose.

- (1) Intent. It is the intent of this district to promote the development of a pedestrian-oriented central area within the Township which contains an integrated mix of residential, retail, office, entertainment, civic, institutional, and recreational uses which can serve as a community focal point.
- (2) Goal. It is the goal of the Town Center to provide a clearly defined single location for the most intensive kinds of uses. The Town Center will encourage innovative planning techniques which will facilitate higher-quality development with unified architectural and building schemes, pedestrian-oriented walkways connecting buildings, bicycle and mass transit access, unified landscaping and signage, and coordinated storm drainage and open space areas that are consistent with the Township Comprehensive Plan. **[Amended 4-22-2020 by Ord. No. 453]**

B. Use regulations. A lot may be used or occupied for one or more of the following purposes. Conditional use review shall be required only where specifically stated or when the project exceeds one or more of the thresholds specified in § 325-124A of this chapter. **[Amended 9-9-2015 by Ord. No. 426]**

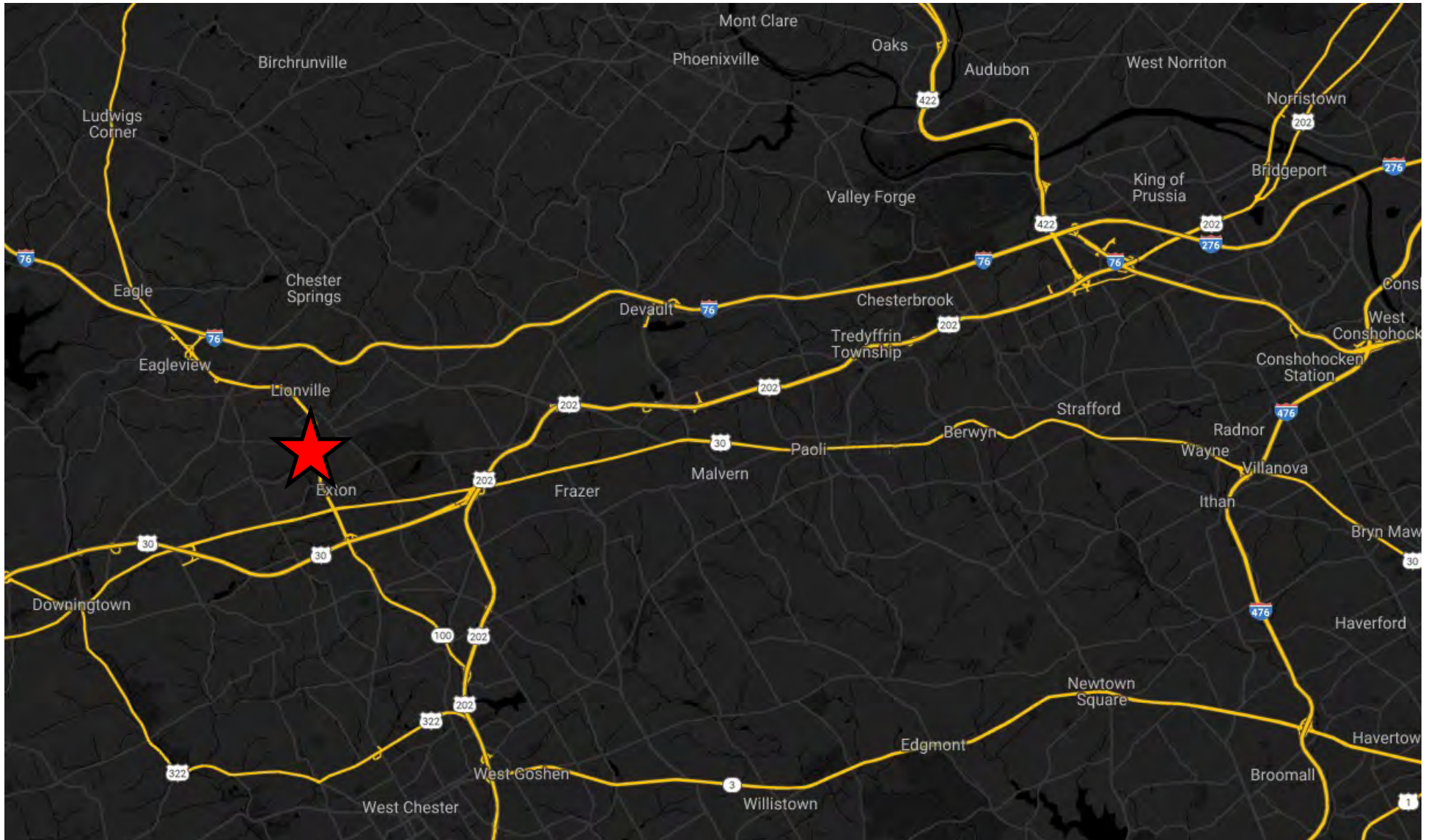
(1) Group I - residential.

- (a) Multifamily dwellings and townhouses.
- (b) Life-care facility or personal care facility when authorized as a conditional use by the Board of Supervisors subject to § 325-124 of this chapter, and the following conditions:
 - [1] The property upon which the facility is located must be contiguous and adjacent to a major arterial street and primary access must be located within the frontage of the property along and upon a major arterial street.
 - [2] The Township shall not issue any use and occupancy permit for such a facility until the applicant for such permit has documented, to the satisfaction of the Township, receipt of all pertinent approvals and licenses from the appropriate state agencies.
 - [3] Life-care facilities are further subject to the requirements of § 325-45D of this chapter.

(2) Group II - nonresidential and mixed use.

- (a) Office buildings.
- (b) Hotels and motels. Permitted accessory uses include but are not necessarily limited to eating and drinking establishments, fitness facilities, personal services, retail stores, retail services, and meeting rooms and areas suitable for hosting conferences, conventions, receptions, and similar events. Access to accessory uses may be restricted to guests of the hotel or motel at the discretion of the owner. **[Amended 4-22-2020 by Ord. No. 453]**
- (c) Personal services.
- (d) Retail stores and services. **[Amended 4-22-2020 by Ord. No. 453]**
- (e) Eating and drinking establishment.
- (f) Banks and other financial institutions and services.
- (g) Fitness facility.
- (h) Medical services.
- (i) Continuing education facility.
- (j) Public place of amusement and motion-picture theater when authorized as a conditional use by the Board of Supervisors subject to § 325-124 of this chapter, excepting that when such use is a sexually oriented business it shall be prohibited in the Town Center district.
- (k) Vehicle fueling stations, when authorized as a conditional use by the Board of Supervisors, subject to § 325-124 of this chapter and further subject to the provisions of § 325-28.2 of this chapter.
- (l) Adult or child day-care center, when authorized as a conditional use by the Board of Supervisors subject to § 325-124 of this chapter and further subject to the provisions of § 325-27 of this chapter.
- (m) Mixed-use buildings, subject to the following conditions:
 - [1] A mixed-use building may contain any combination of uses permitted in Group II above, except a vehicle fueling station.
 - [2] A mixed-use building may contain multifamily residential dwellings in combination with any uses permitted in Group II above, except as noted herein, provided that no such

Regional MAP





CONTACT US

JAKE JEWELL

Office: (484) 887-8202 | Ext. 105
JJewell@PillarRealEstateAdvisors.com

The information contained in this document has been obtained from sources believed reliable. While Pillar Real Estate Advisors, LLC does not doubt its accuracy, Pillar Real Estate Advisors, LLC. has not verified it and makes no guarantee, warranty or representation about it. It is your responsibility to independently confirm its accuracy and completeness. Any projections, opinions, assumptions or estimates used are for example only and do not represent the current or future performance of the property. The value of this transaction to you depends on several factors which should be evaluated by your tax, financial and legal advisors to determine to your satisfaction the suitability of the property for your needs. Photos herein are the property of their respective owners and use of these images without the express written consent of the owner is prohibited.