



# 1,000 SF PROFESSIONAL OFFICE CONDO FOR LEASE IN WEST CHESTER, PA



1515 WEST CHESTER PIKE, UNIT B2 | WEST CHESTER, PA 19382



**PILLAR REAL ESTATE ADVISORS**

P: 484-887-8202 | [www.PillarRealEstateAdvisors.com](http://www.PillarRealEstateAdvisors.com)

535 N. Church Street, West Chester, PA 19380



## PROPERTY HIGHLIGHTS

- 1,000 SF First Floor Office Condo
- Space features (4) Private Offices, Waiting / Reception Area, Kitchenette, and Private Powder Room
- Abundant Natural Light
- Office Condo can be Leased Fully Furnished
- Located in Highly Desirable Westtown Professional Business Center
- Ample On-Site Parking
- Large Offices with Ample Storage
- Well-Located on Rt. 3 West Chester Pike
- Easy Access to Major Thoroughfares Rt. 3, U.S. 202, Rt. 352, and Rt. 926

**LEASE RATE:**

**\$2125 PER MONTH + UTILITIES**



1515 WEST CHESTER PIKE, UNIT B2 | WEST CHESTER, PA 19382



**PILLAR REAL ESTATE ADVISORS**

P: 484-887-8202 | [www.PillarRealEstateAdvisors.com](http://www.PillarRealEstateAdvisors.com)

535 N. Church Street, West Chester, PA 19380



# 1,000 SF PROFESSIONAL OFFICE CONDO FOR LEASE IN WEST CHESTER, PA



1515 WEST CHESTER PIKE, UNIT B2 | WEST CHESTER, PA 19382

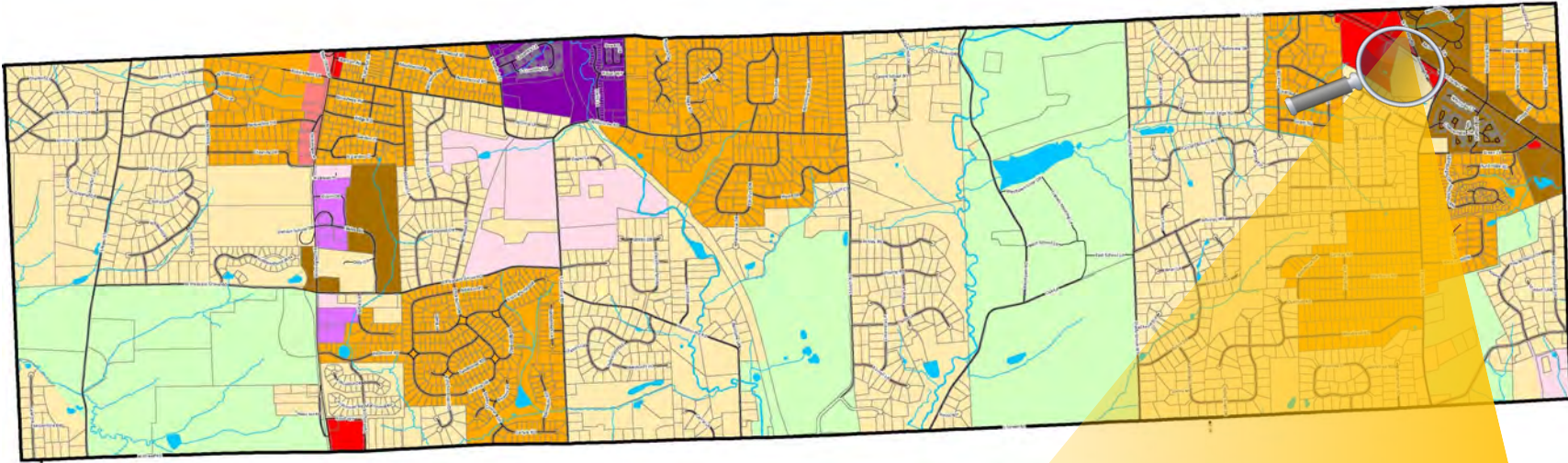


**PILLAR REAL ESTATE ADVISORS**

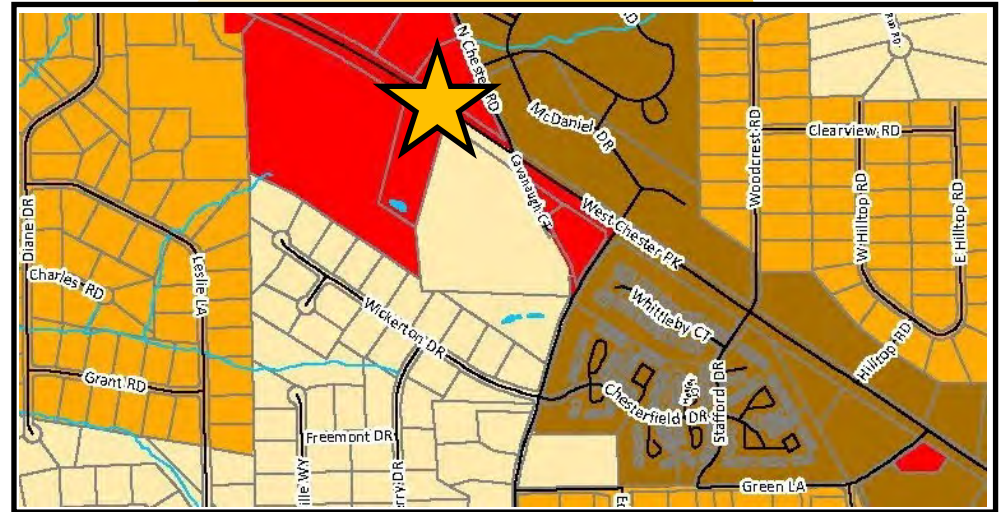
P: 484-887-8202 | [www.PillarRealEstateAdvisors.com](http://www.PillarRealEstateAdvisors.com)

535 N. Church Street, West Chester, PA 19380





Zoning:  
Commercial



1515 WEST CHESTER PIKE, UNIT B2 | WEST CHESTER, PA 19382

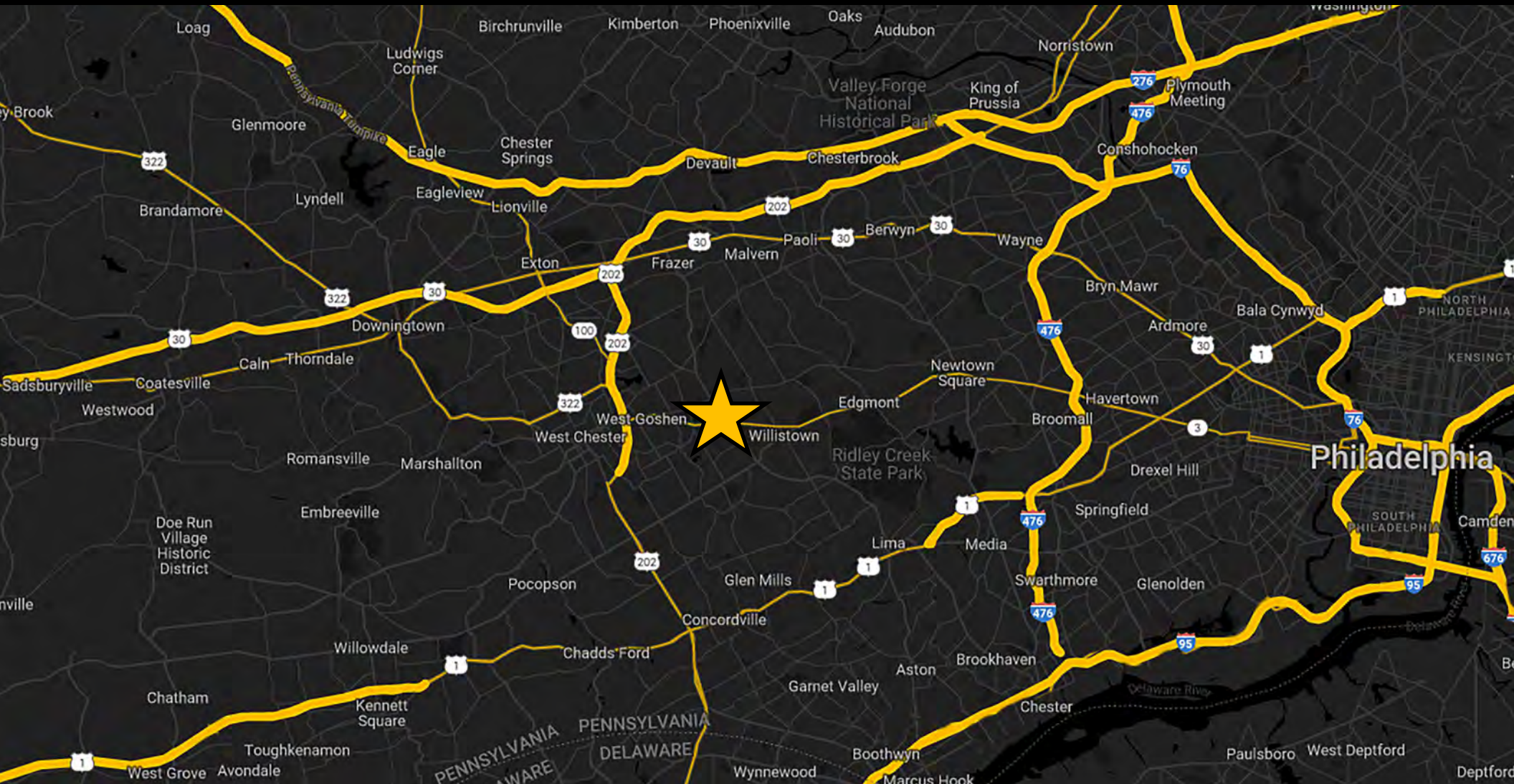


**PILLAR REAL ESTATE ADVISORS**

P: 484-887-8202 | [www.PillarRealEstateAdvisors.com](http://www.PillarRealEstateAdvisors.com)

535 N. Church Street, West Chester, PA 19380





1515 WEST CHESTER PIKE, UNIT B2 | WEST CHESTER, PA 19382



**PILLAR REAL ESTATE ADVISORS**

P: 484-887-8202 | [www.PillarRealEstateAdvisors.com](http://www.PillarRealEstateAdvisors.com)

535 N. Church Street, West Chester, PA 19380



# 1,000 SF PROFESSIONAL OFFICE CONDO FOR LEASE IN WEST CHESTER, PA

## PILLAR REAL ESTATE ADVISORS

BRINGING EXPERIENCE, PROFESSIONALISM, AND INTEGRITY  
TO COMMERCIAL REAL ESTATE BROKERAGE

**JAKE JEWELL**

**JJEWELL@PILLARREALESTATEADVISORS.COM**

**484-887-8202 | Ext. 105**

"The information contained in this document has been obtained from sources believed reliable. While Pillar Real Estate Advisors, LLC does not doubt its accuracy, Pillar Real Estate Advisors, LLC. has not verified it and makes no guarantee, warranty or representation about it. It is your responsibility to independently confirm its accuracy and completeness. Any projections, opinions, assumptions or estimates used are for example only and do not represent the current or future performance of the property. The value of this transaction to you depends on several factors which should be evaluated by your tax, financial and legal advisors to determine to your satisfaction the suitability of the property for your needs.

Photos herein are the property of their respective owners and use of these images without the express written consent of the owner is prohibited."

**1515 WEST CHESTER PIKE, UNIT B2 | WEST CHESTER, PA 19382**



**PILLAR REAL ESTATE ADVISORS**

P: 484-887-8202 | [www.PillarRealEstateAdvisors.com](http://www.PillarRealEstateAdvisors.com)

535 N. Church Street, West Chester, PA 19380